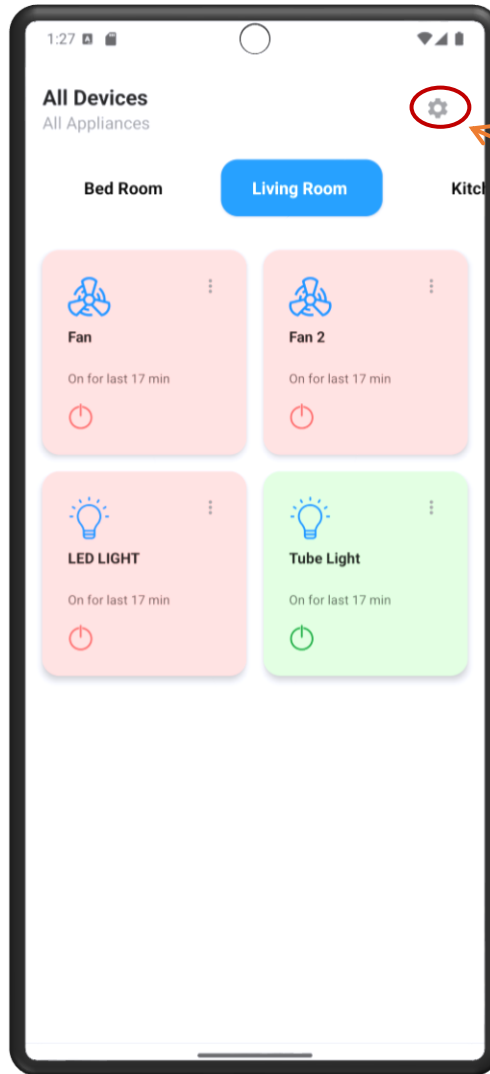
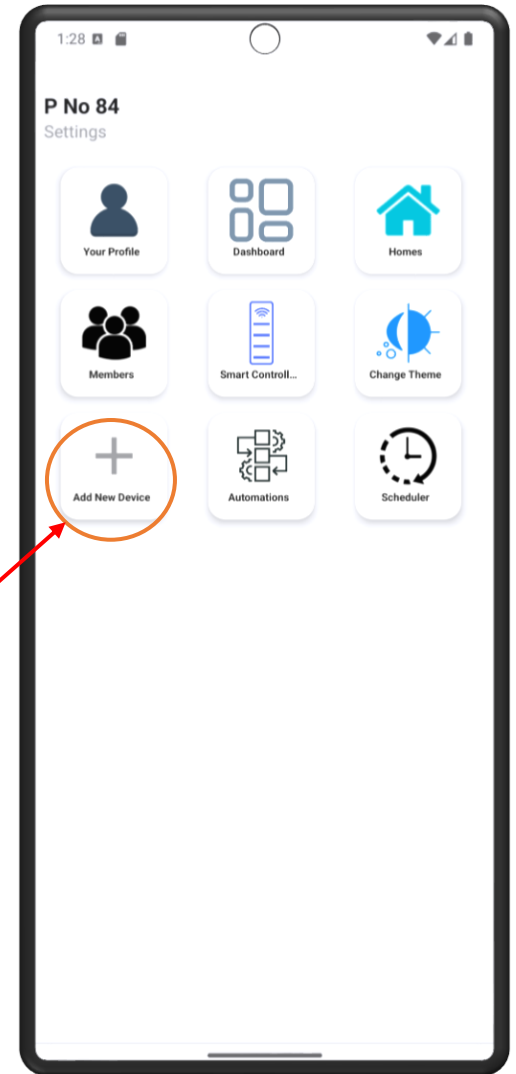


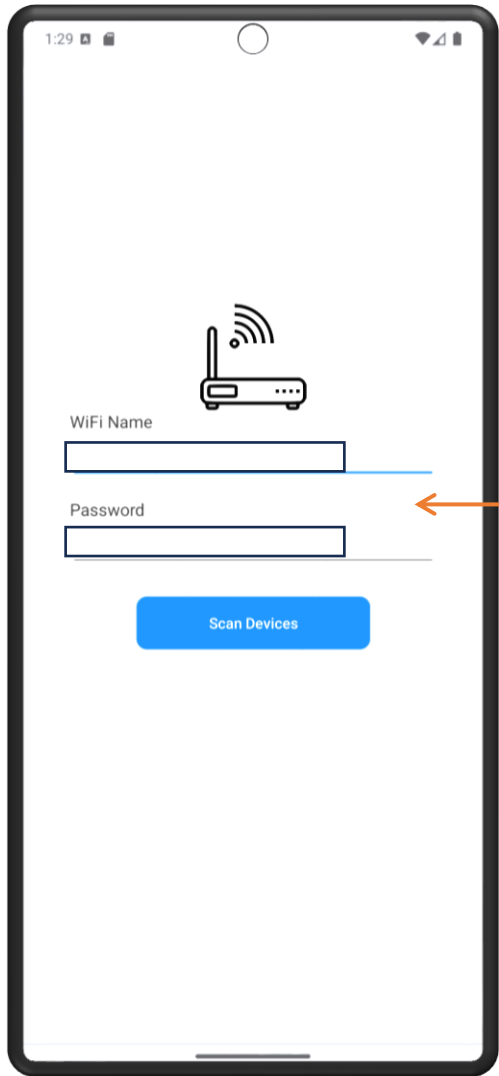
Connect to
2.4G WiFi of
User's Home



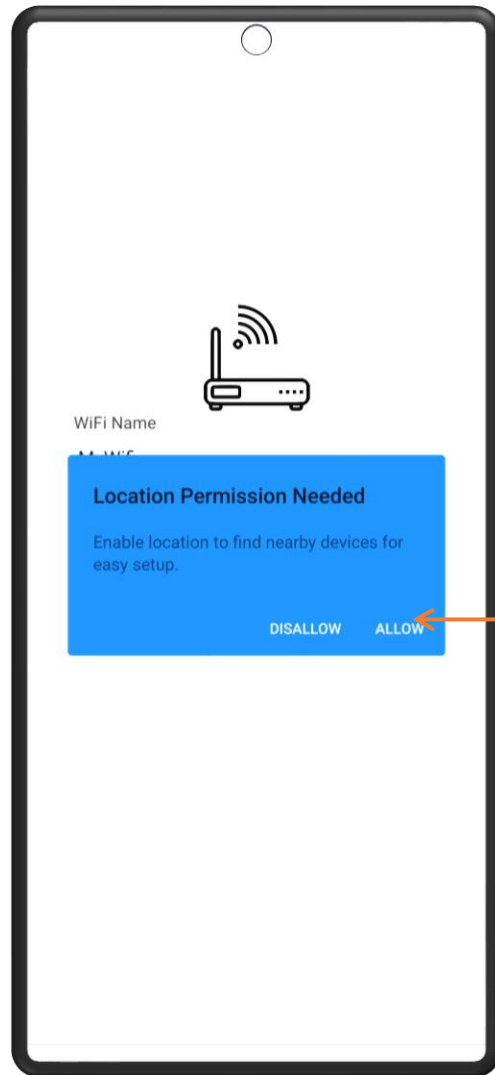
Click Here



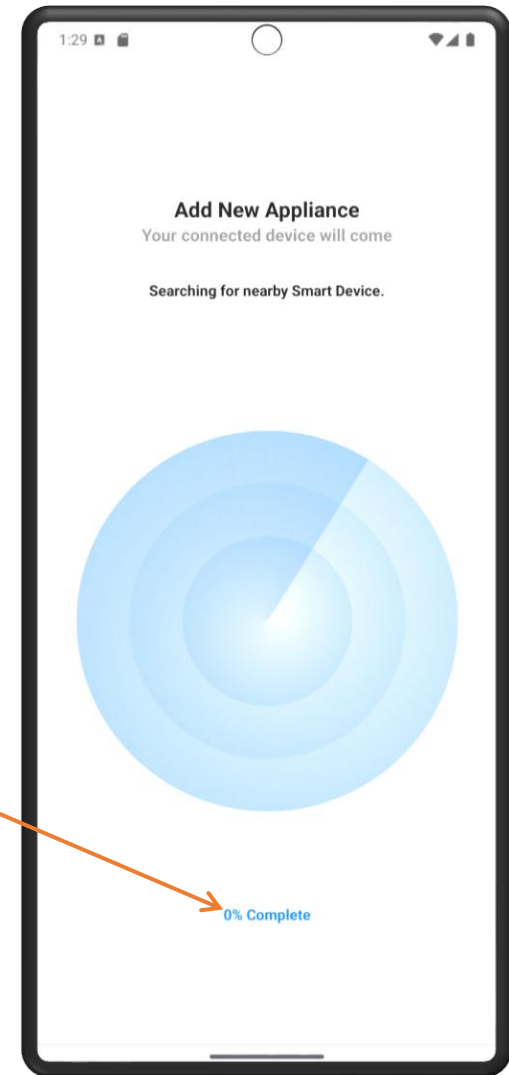
Click Here



Enter WiFi ID
and
Password

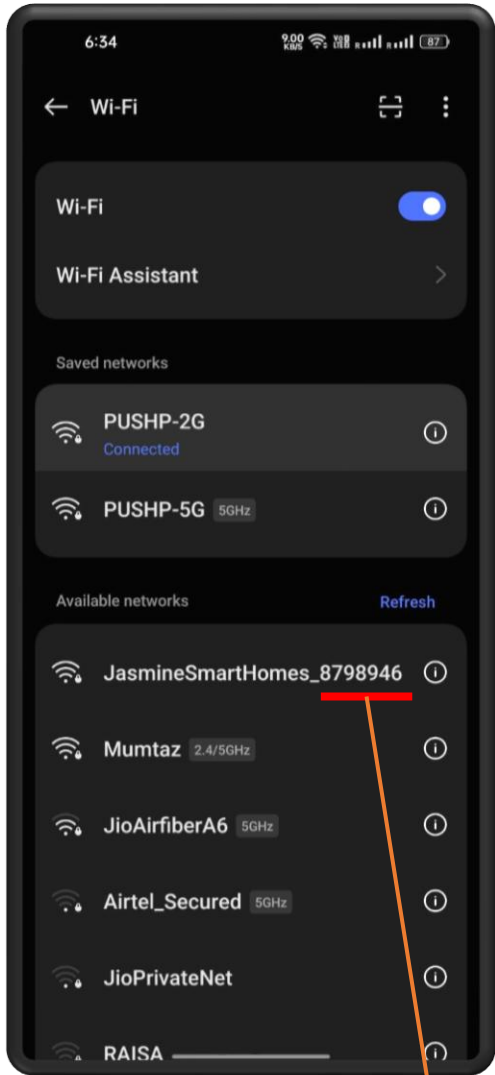


Click Allow

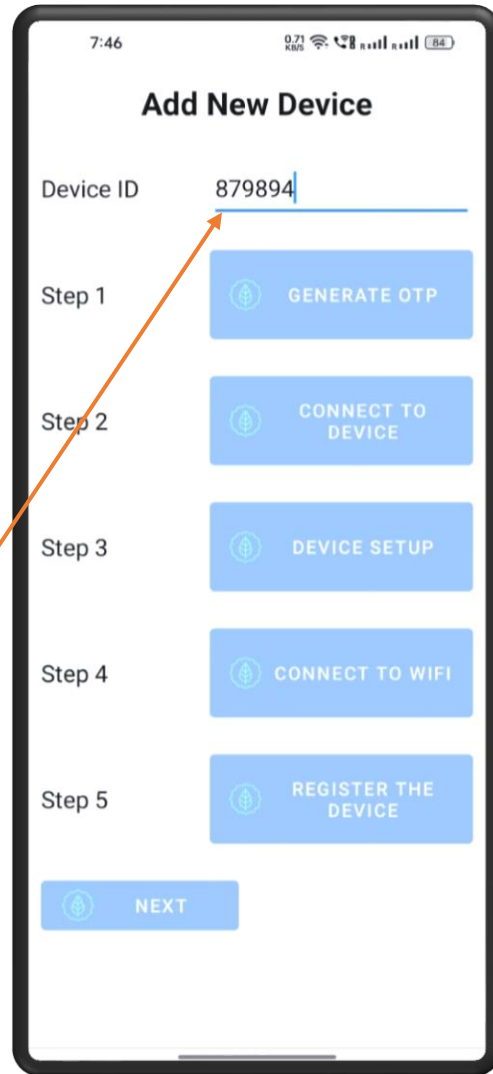


Click Here

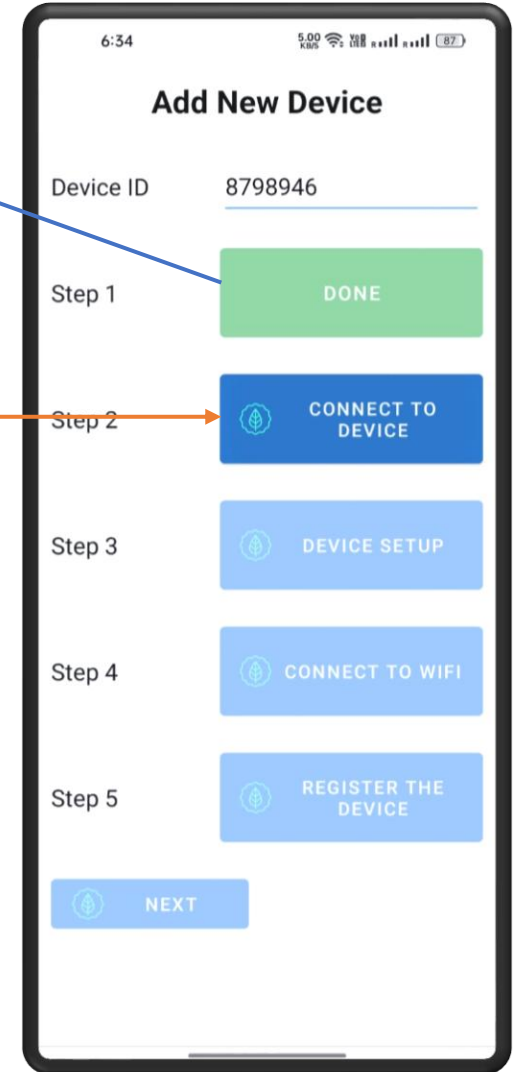
0% Complete



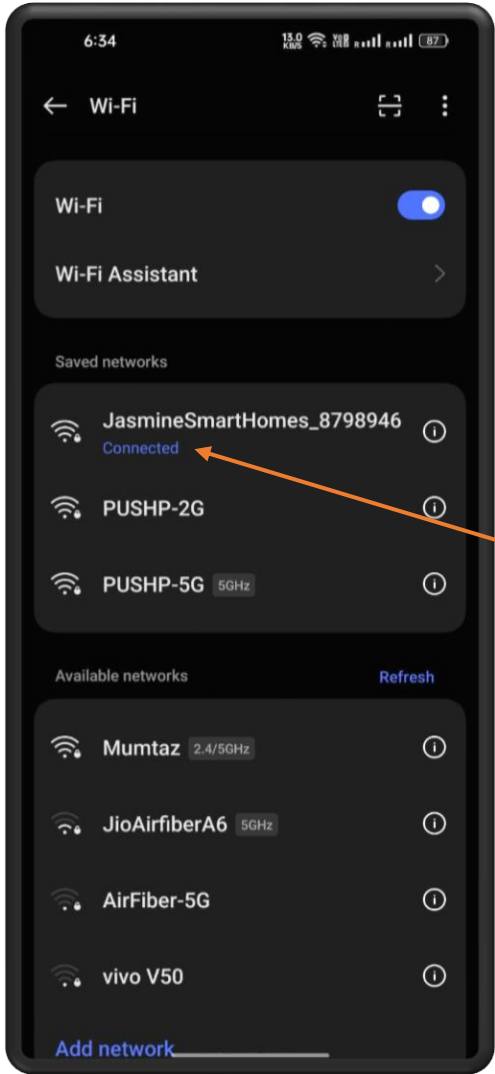
Enter The Device Id as displayed in WiFi Settings
(Starting With JasmineSmartHomes_*****)



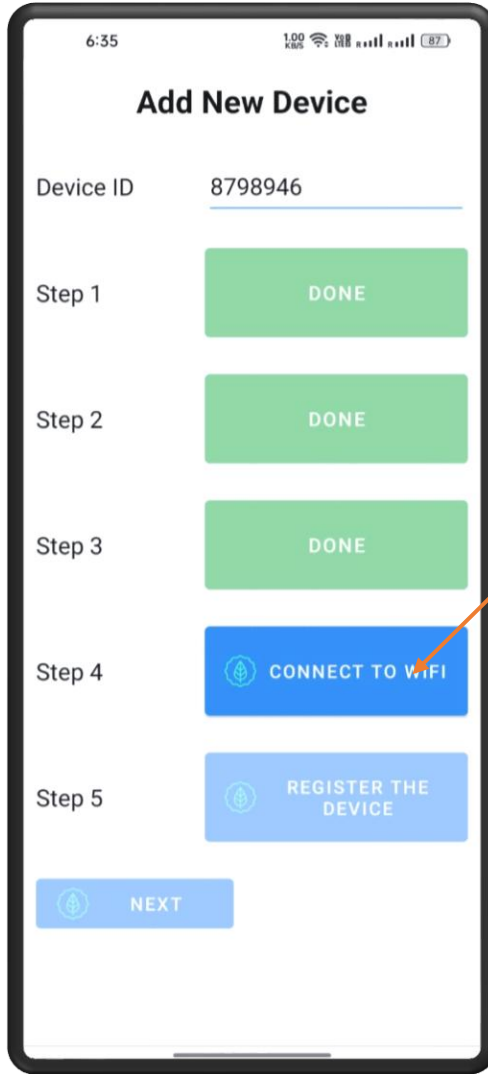
Password for the device
will be automatically
copied



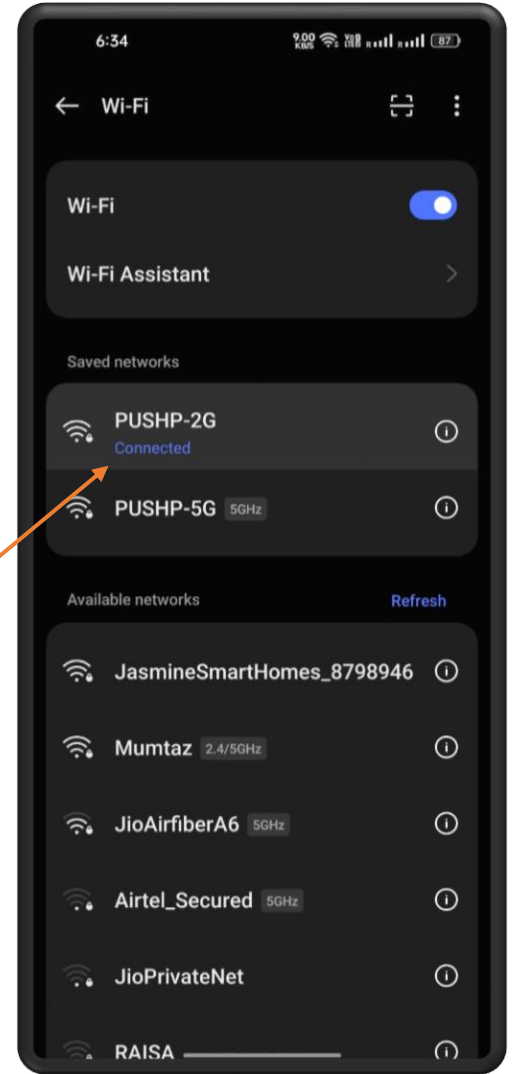
Click Here

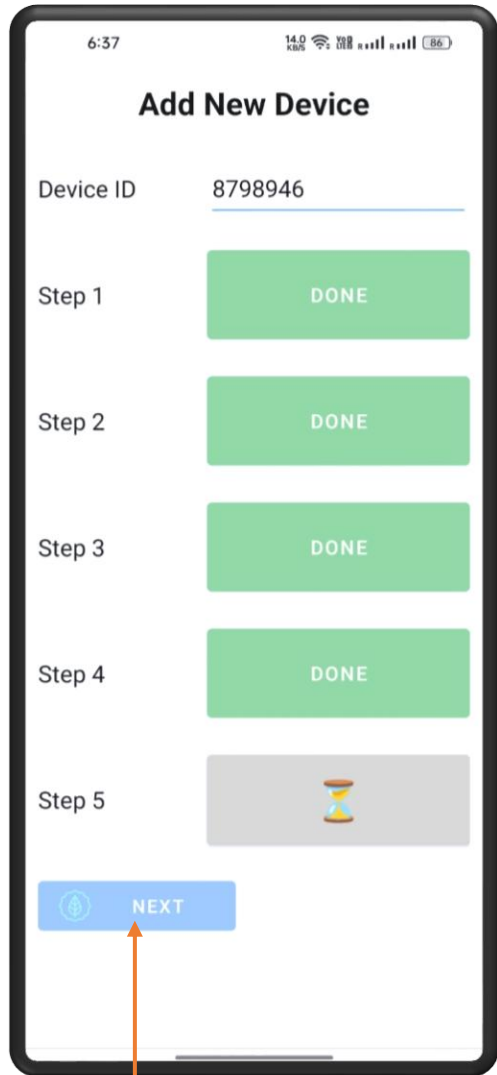


Click On the Device Wifi, Paste the password and connect

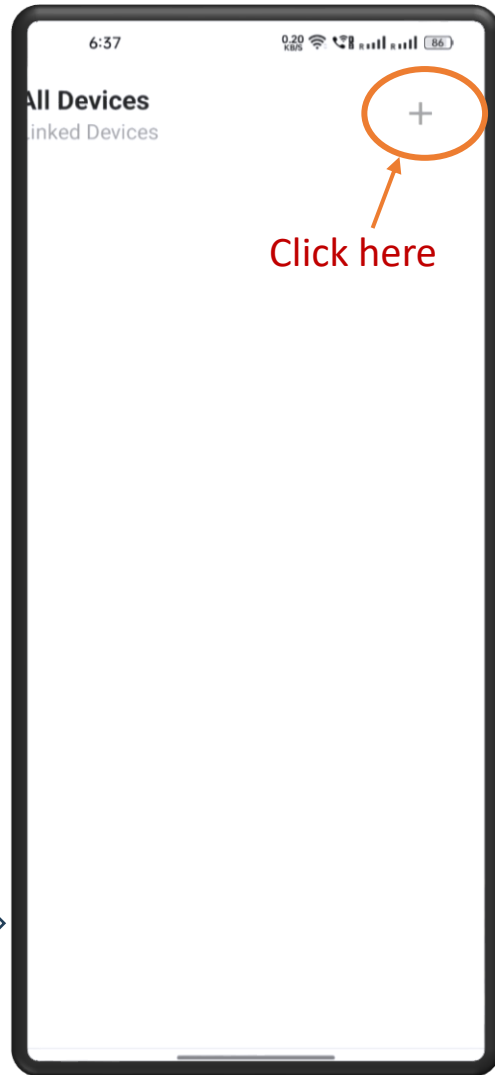


Click Here
Connect back to the home WiFi

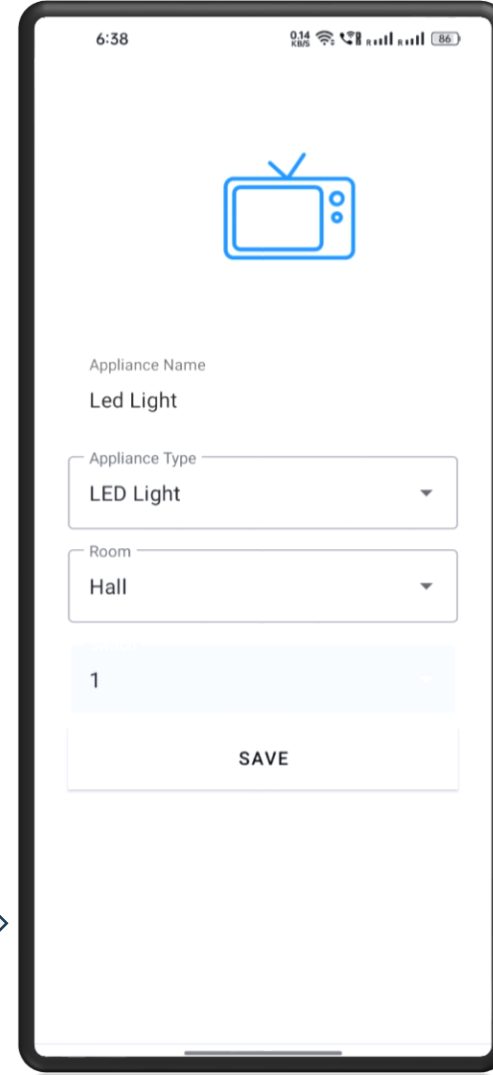




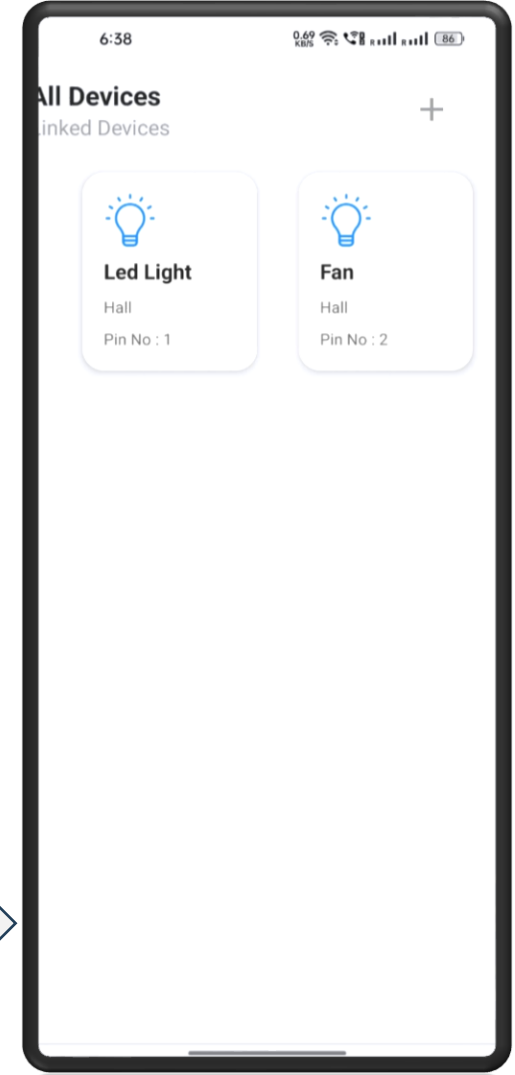
Click next



Click here



Enter Details And Click Save



Congratulations! You are done